



TOP 10

Best Practices For Production Scheduling

WWW.PLANETTOGETHER.COM

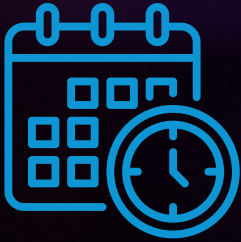




Optimizing production scheduling **not only** keeps your operations running smoothly but also drives significant ROI. Companies that implement best practices in scheduling often see efficiency improvements of up to **20%**, leading to reduced operational costs and improved resource utilization. Better scheduling can also reduce lead times by **30%**, helping you meet customer demands faster and boost on-time delivery rates.

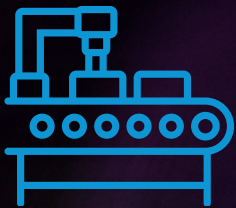
Inconsistent delivery times?

Here are 10 Best Practices for Production Scheduling:



1. DEVELOP A MASTER SCHEDULE

Create a master schedule that outlines the production plan for the coming weeks or months. This schedule should include all the necessary information, including the order quantities, production time, and delivery dates.



2. PRIORITIZE PRODUCTION

Prioritize production based on customer demand, profitability, and resource availability. This will help ensure that the most important products are produced first and that resources are used efficiently.



3. OPTIMIZE BOTTLENECK UTILIZATION

Maximize bottleneck utilization to increase production capacity and reduce costs. Group similar jobs, sequence in optimal order, buffer to avoid idleness, and schedule maintenance during low demand to minimize changeovers and downtime. Optimizing non-bottlenecks is an illusion and won't improve throughput.



4. COMMUNICATE WITH SUPPLIERS

Communicate with suppliers to ensure that they are aware of production schedules and can provide the necessary materials and components on time.



5. MONITOR INVENTORY LEVELS

Monitor inventory levels to ensure that there is enough raw material and finished goods inventory to support the production schedule.

Resource constraints?

Here are 10 Best Practices for Production Scheduling:



6. IDENTIFY BOTTLENECKS

Identify bottlenecks in the production process and take steps to address them. This can include adding additional resources, reorganizing workstations, or adjusting production processes.



7. REVIEW AND ADJUST THE SCHEDULE REGULARLY

Review and adjust the production schedule regularly to reflect changes in demand, production capacity, or resource availability. Use scenario planning to evaluate different production scenarios and assess the impact of changes. This can help identify potential risks and opportunities and enable proactive decision-making.



8. MONITOR AND USE REAL-TIME DATA

Use real-time data to monitor production progress and adjust the schedule as needed. This can help identify potential issues before they become problems.



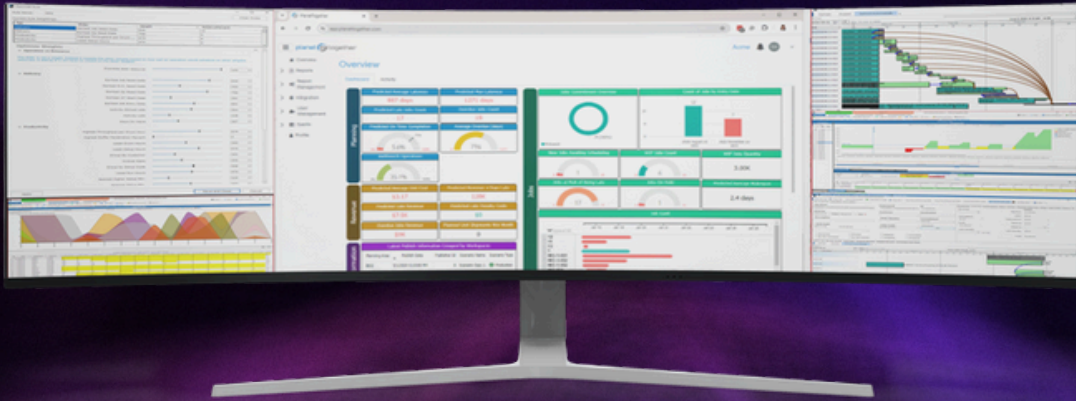
9. INVOLVE ALL STAKEHOLDERS

Involve all stakeholders in the scheduling process, including production staff, sales, customer service, and management. This can help ensure that everyone is working towards the same goals.



10. CONTINUOUSLY IMPROVE THE PROCESS

Continuously improve the production scheduling process by analyzing performance metrics, identifying areas for improvement, and implementing changes. This can help increase efficiency and reduce costs over time.



WANT TO OPTIMIZE THE **PERFORMANCE** OF YOUR BUSINESS?

REQUEST A DEMO TODAY

Join the manufacturing revolution with PlanetTogether APS
where the impossible becomes achievable and your production
dreams become a reality.



+1 888-317-8807
INFO@PLANETTOGETHER.COM
WWW.PLANETTOGETHER.COM